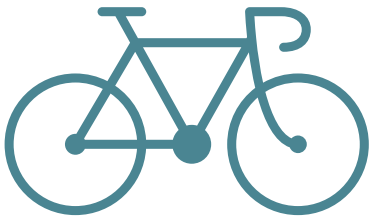


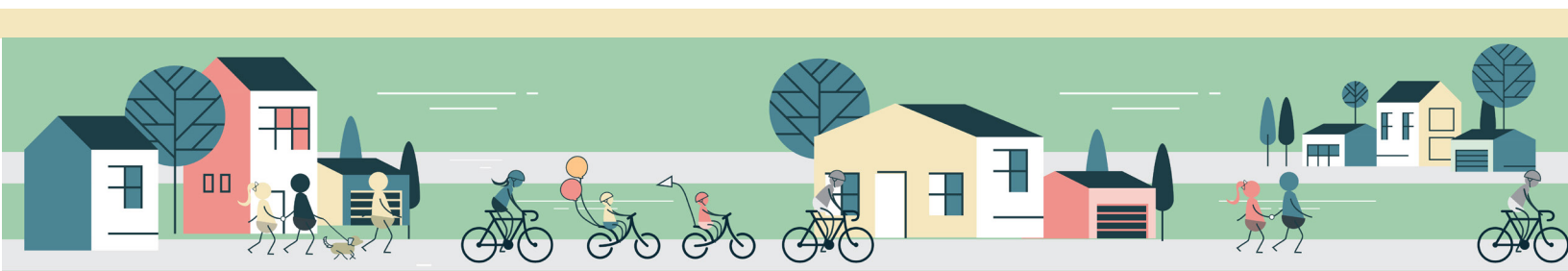


SOUTH MERIDIAN
Neighborhood
BICYCLE & PEDESTRIAN PLAN

Hello Neighbors!



Thank you for taking the time to learn more about the South Meridian Neighborhood Bicycle and Pedestrian Plan and participate in the public involvement process.





Your input matters!



Step 1

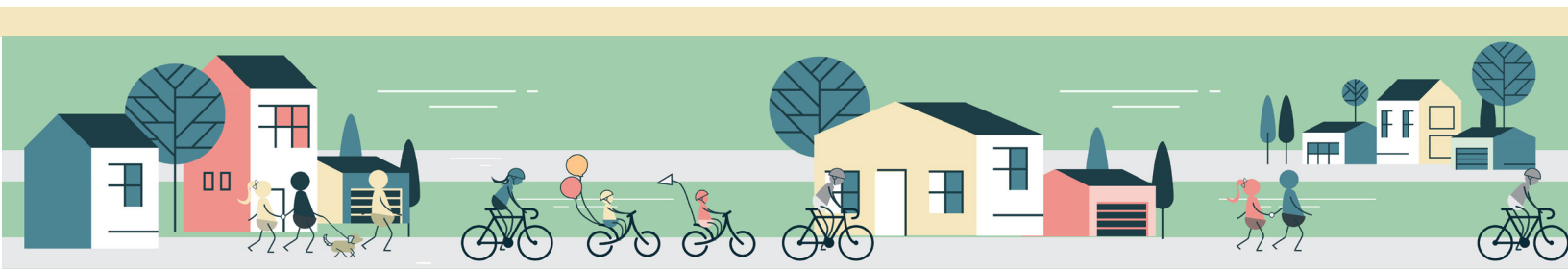
Review the following slides to learn more about the plan.



Step 2

Use the online map to show us where you think improvements can be made for walking and biking in the South Meridian area on local streets.*

**Please note that ACHD does not have jurisdiction over State Highways.*





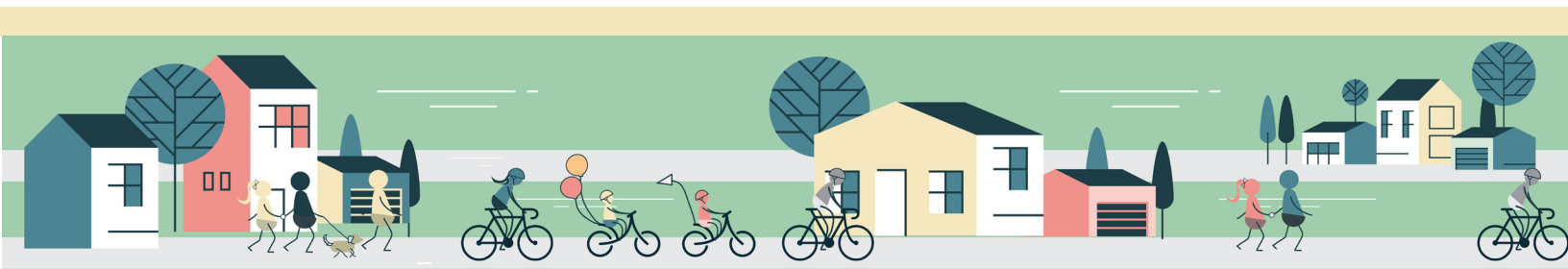
Purpose of Plan

The Ada County Highway District (ACHD) and the City of Meridian are seeking your input about bicycle and pedestrian needs in the South Meridian area.



ACHD relies on your input to prioritize projects that will improve walking and bicycling experiences in your neighborhood.

Based on your feedback, the plan will identify projects and priorities that can be implemented by ACHD or the City.

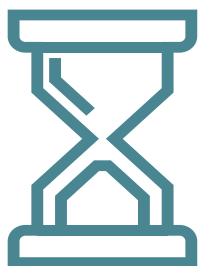




Plan Schedule

Winter

- » Review existing conditions



Spring/Early Summer

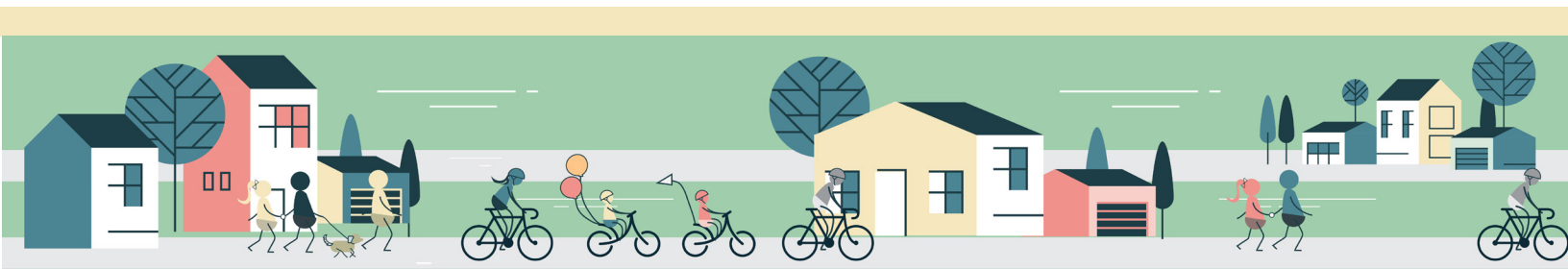
- » Determine needs and priorities based on community input
- » Identify projects for further review

Mid-Summer

- » Develop draft plan for review and comment

Fall

- » Take final draft plan to ACHD Commission for adoption





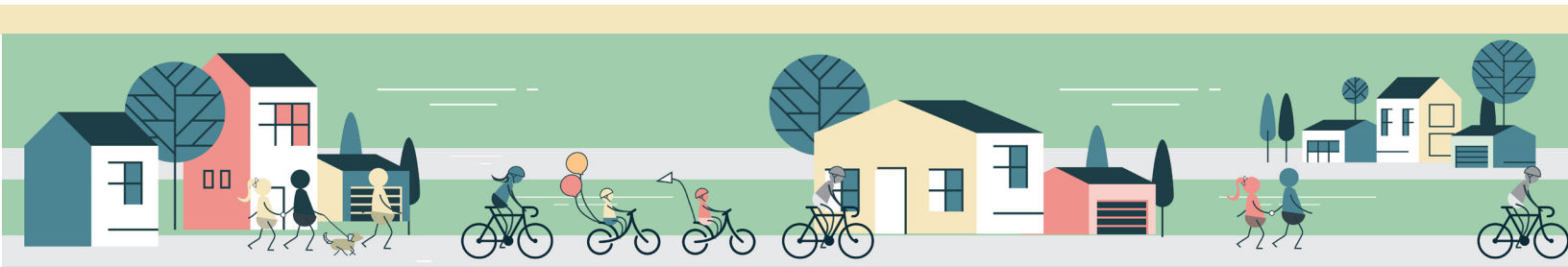
Who Pays for Projects?

ACHD's Community Program funds approximately \$6-8 million sidewalk and bicycle projects a year from:



- » ACHD's general fund
- » Vehicle registration fees

Federal, state and city grants are also sometimes available for funding. Projects generally do not require additional contributions from the neighborhood.



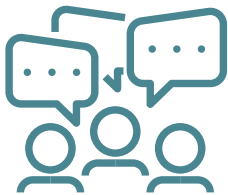


What's Next?



ACHD will review your comments and ideas.

Your input will be used to guide identification of projects and priorities for your neighborhood.



A draft list of projects will be developed and ACHD will seek additional feedback from residents this summer.

The online comment map will be available through April 26, 2021.

